

Old Lyme Hiking Trails



Photo by Edie Twining

One of Old Lyme's best assets is the numerous hiking trails in town stewarded by various non-profit groups. The Old Lyme Land Trust stewards 1,100 acres of land with 800 acres with hikeable trails.

Come learn about all our trails. Easy hikes, challenging ones, hikes with water views, and others that take you into the deep woods. We will point out which of our trails connect to Old Lyme Open Space properties and provide a town-wide map.

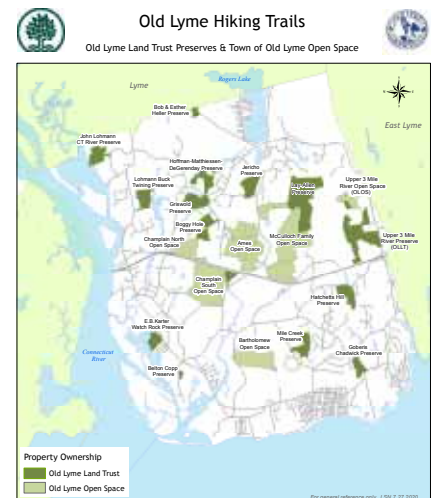
Registration Appreciated - Drop ins welcome

OldLymeLibrary.org

It's all happening
@ the Phoebe

2 Library Lane | Old Lyme CT 06371 860-434-1684 | oldlymelibrary.org

**Wednesday
August 17th
6:30**
at the Phoebe
Old Lyme Library
Community Room



Co-Sponsored by:



History of Watch Rock



Photo by Edie Twining

The Old Lyme Historical Society will talk about the preserve's early history and how the Old Lyme Land Trust came to acquire it. This is one of Old Lyme's most beautiful preserves, with views along the rocky shoreline of the Duck River near the mouth of the Connecticut River.

An easy hike along the same waterfront frequented by the earliest inhabitants will follow the lecture.

Registration Appreciated - Drop ins welcome

OldLymeLibrary.org

It's all happening
@ the Watch Rock

**Wednesday
Sept. 7th
5:30**

**at
Watch Rock
Preserve**

Joel Road off Rte. 156

Co-Sponsored by:



**Old Lyme
Land Trust**



**Old Lyme
Historical Society**



2 Library Lane | Old Lyme CT 06371 860-434-1684 | oldlymelibrary.org

Birding at Lohmann Preserve



Photo by Edie Twining

Wetlands scientist Michael Aurelia & environmental planner Denise Savageau will lead a walk focused on birds and habitats found in Old Lyme. Bring binoculars and a keen ear as we learn about birds that use the Lohmann Preserve as a stopover during the fall migration and others that are year-round residents.

The start of the trail is an uphill climb that opens out to this unique parklike area created by John Lohmann in the 1960's - 70's. The property also includes a beautiful path down to the Connecticut River where eagles and osprey are among the many local birds!

Registration Appreciated - Drop ins welcome

OldLymeLibrary.org

It's all happening
@ the Hoffman

**Saturday
Oct. 15th**

2:30

at

**John Lohmann
CT River
Preserve**

33 Coult Lane



Co-Sponsored by:



Old Lyme
Land Trust



2 Library Lane | Old Lyme CT 06371 860-434-1684 | oldlymelibrary.org

Landscape Photography



Photo by Charles Gurche

Guest lecturer Charles Gurche will share his expertise about aspects of approaching landscape photography concentrating largely on light and composition. He'll talk about the elements of design and how to scout locations and think about visual ideas before picking up a camera. Time is allotted for questions at the end of the lecture.

Share your new photos with the Old Lyme Land Trust and we will post them on our website: www.oldlymelandtrust.org

Co-Sponsored by:



For ZOOM link please register at
OldLymeLibrary.org

It's all happening
(virtually) @ the Phoebe

**Wednesday
Nov. 9th
6:30**

Zoom Lecture



Charles Gurche has received awards from the Roger Tory Peterson Institute of Natural History, the Society of Professional Journalists, Nature's Best International Photography Awards, and the Washington State Governor's Book Award. His images have appeared in hundreds of publications including Audubon, National Geographic, Smithsonian and National Park Service books and magazines.



2 Library Lane | Old Lyme CT 06371 860-434-1684 | oldlymelibrary.org